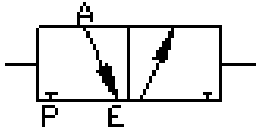
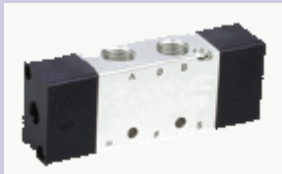


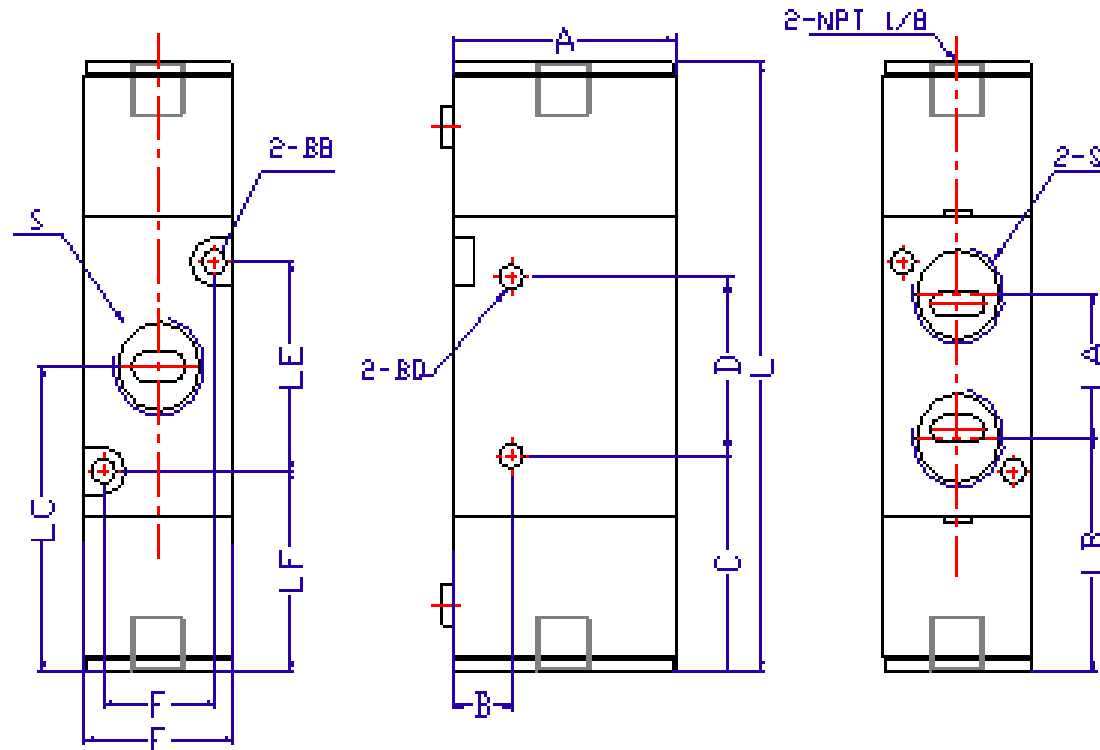
STC Solenoid and Pneumatic Directional Control Valve: 3A120-420 Series Specifications



Part No.	Unit Price	Valve Picture	Port Size (NPT)	Port No/ Position/Solenoid	Cv Flow Rate
3A120-1/8	\$24.95		1/8 NPT	3/2/2 Double Solenoid Three Way Valve	0.67 25 SCFM @100 PSI
3A220-1/4	\$25.47		1/4 NPT		0.89 53 SCFM @100 PSI
3A320-3/8	\$30.15		3/8 NPT		1.68 80 SCFM @100 PSI
3A420-1/2	\$51.46		1/2 NPT		2.79 160 SCFM @100 PSI

STC Solenoid Valve Dimensions (UNIT=MM)

MODEL: 3A220; 3A320



MODEL	A	B	D	E	F	L	S	W	BB	BD	LA	LB	LC	LE	LF
3A120-1/8	27	7.7	21	18.0	13	68.8	1/8	53.5	3.3	3.3	16	14.0	23	19	12.5
3A220-1/4	35	8.0	25	22.0	17	87.9	1/4	66.5	3.3	4.3	18	21.0	31	33	12.5
3A320-3/8	40	10.5	30	27.0	20	96.5	3/8	69	4.3	4.3	24	20.5	32.5	35	15
3A420-1/2	50	13.5	51	34.0	27	119.9	1/2	73.9	4.3	5.5	36	25.5	41.5	44	15.5